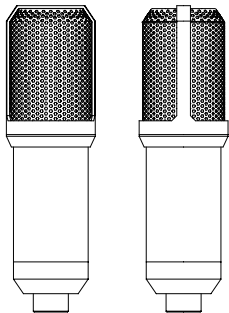


TEMPEST

BATTLE SHOUT 300 XLR

USER MANUAL • MANUAL DE USUARIO • MANUEL DE L'UTILISATEUR
BENUTZERHANDBUCH • MANUALE D'USO • MANUAL DO USUÁRIO



**BATTLE SHOUT
300 XLR**

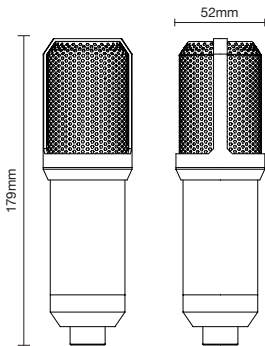
BATTLE SHOUT 300 XLR

TECHNICAL SPECIFICATIONS

Mic unit	16mm condenser
Directivity	Cardioid
Frequency response	20Hz - 20 kHz
Sensitivity	-45±3db
Impedance	≥680Ω
Operating voltage	1.0V-48V
Dimensions	179mmx52mmx52mm

PACKING LIST

Condenser Microphone X1	
Microphone Cable XLR to 3.5mm jack X1	
Shock Mount X1	Boom Stand X1
Big steel mesh Pop Filter X1	Table Clip X1
Mini Pop Filter X1	User Manual X1



OPERATING GUIDE

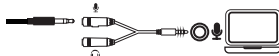
Connect With Sound Card



Connect With Desktop Computers

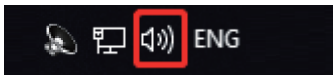


Connect With Laptops

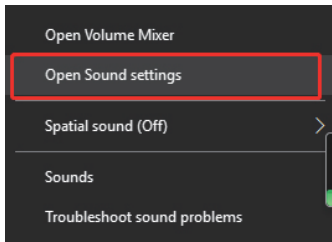


MIC VOLUME SETTING/LISTENING SETTING

- 1 Right-click on the sound icon



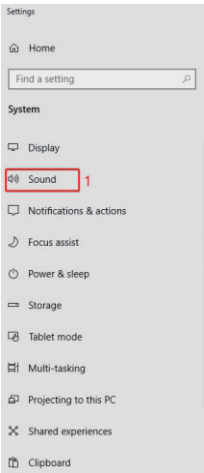
- 2 Left-click on Sound Settings





3

Left-click on Sound control panel



Sound

Manage sound devices

Advanced sound options



App volume device preferences

Customise app volumes and the speakers or devices they use.

Related Settings

Bluetooth and other devices

Sound Control Panel **2**

Microphone privacy settings

Ease of Access audio settings

Do you have a question?

Get help

Make Windows better

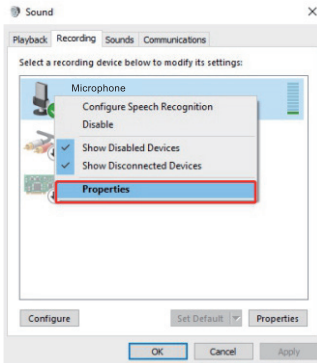
Give us feedback



BATTLE SHOUT 300 XLR

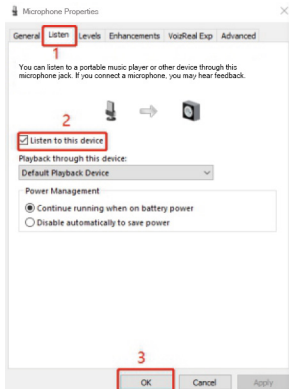
4

Left-click on (Record), Select (Microphone), Right-click on it and select (Properties)



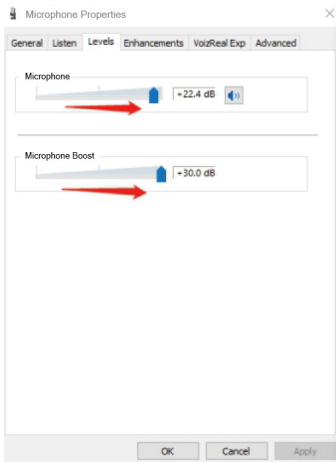
5

Select (Listening) from the pop up window, then you can choose listening to this device or not, by tick/untick the option box



6

Set the microphone volume in the (Level) window (as shown below)



ESPECIFICACIONES TÉCNICAS

Unidad de micrófono	Condensador de 16 mm
Directividad	Cardioide
Respuesta en frecuencia	20Hz - 20 kHz
Sensibilidad	-45±3db
Impedancia	≥680Ω
Tensión de funcionamiento	1.0V-48V
Dimensiones	179mmx52mmx52mm

LISTA DE EMBALAJES

Micrófono de condensador X1

Cable de micrófono XLR a jack de 3,5 mm X1

Amortiguador X1

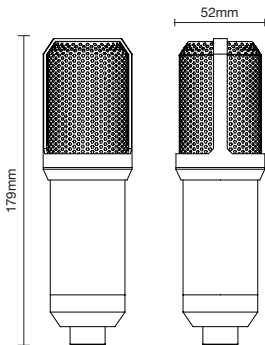
Soporte de la pluma X1

Filtro Pop de malla de acero grande X1

Clip de mesa X1

Filtro Mini Pop X1

Manual de usuario X1



GUÍA DE FUNCIONAMIENTO

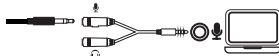
Conectar con tarjeta de sonido



Conectar con ordenadores de sobremesa



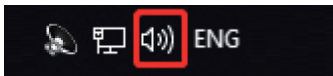
Conectar con portátiles



AJUSTE DEL VOLUMEN DEL MICRÓFONO/ AJUSTE DE LA ESCUCHA

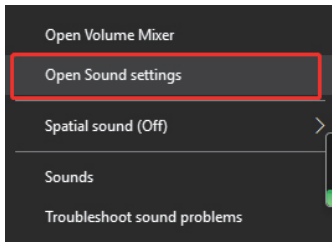
1

Haga clic con el botón derecho en el icono de sonido



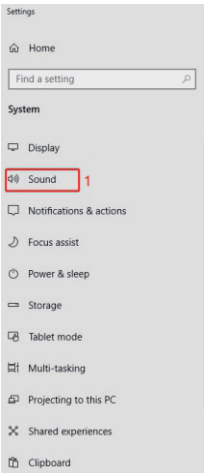
2

Haga clic con el botón izquierdo del ratón en Ajustes de sonido



3

Haga clic con el botón izquierdo del ratón en el panel de control Sonido



Sound

Manage sound devices

Advanced sound options



App volume device preferences

Customise app volumes and the speakers or devices they use.

Related Settings

Bluetooth and other devices

Sound Control Panel 2

Microphone privacy settings

Ease of Access audio settings

Do you have a question?

Get help

Make Windows better

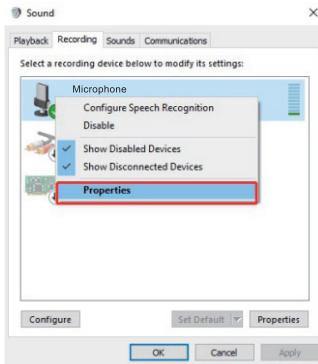
Give us feedback



BATTLE SHOUT 300 XLR

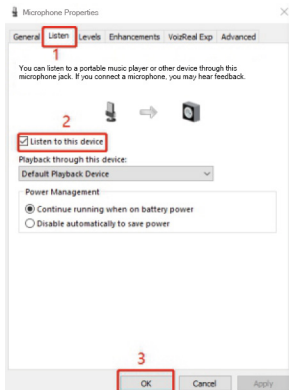
4

Haga clic con el botón izquierdo en (Grabar), seleccione (Micrófono), haga clic con el botón derecho y seleccione (Propiedades)



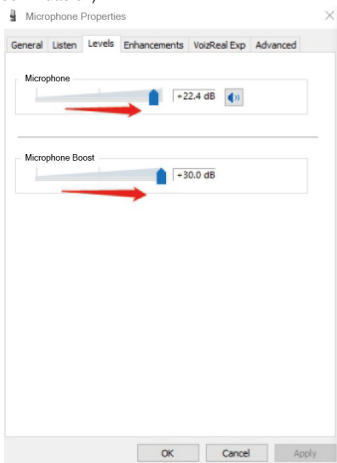
5

Seleccione (Escuchar) en la ventana emergente, a continuación, puede elegir escuchar este dispositivo o no, marcando/desmarcando la casilla de opción



6

Ajuste el volumen del micrófono en la ventana (Nivel) (como se muestra a continuación)



SPÉCIFICATIONS TECHNIQUES

Unité de micro	Condensateur 16 mm
Directivité	Cardioïde
Réponse en fréquence	20Hz - 20 kHz
Sensibilité	-45±3db
Impédance	≥680Ω
Tension de fonctionnement	1.0V-48V
Dimensions de l'appareil	179mmx52mmx52mm

LISTE D'EMBALLAGE

Microphone à condensateur X1

Câble microphone XLR vers jack 3,5 mm X1

Monture de l'amortisseur X1

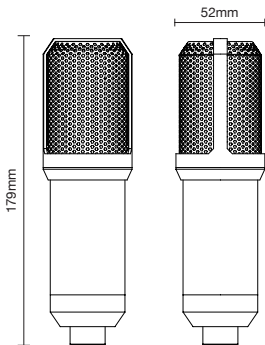
Support de perche X1

Filtre pop à grande maille d'acier X1

Clip de table X1

Mini filtre pop X1

Manuel d'utilisation X1



GUIDE D'UTILISATION

Connexion avec la carte son



Connexion avec des ordinateurs de bureau



Se connecter avec des ordinateurs portables

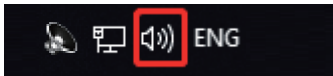


FR

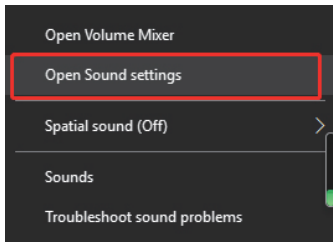
BATTLE SHOUT 300 XLR

RÉGLAGE DU VOLUME DU MICRO/ RÉGLAGE DE L'ÉCOUTE

- 1 Cliquez avec le bouton droit de la souris sur l'icône du son



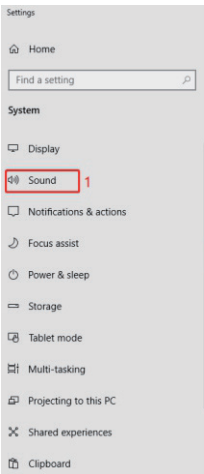
- 2 Cliquez avec le bouton gauche de la souris sur Sound Settings





3

Cliquez avec le bouton gauche de la souris sur le panneau de contrôle du son



Sound

Manage sound devices

Advanced sound options



App volume device preferences

Customise app volumes and the speakers or devices they use.

Related Settings

Bluetooth and other devices

Sound Control Panel 2

Microphone privacy settings

Ease of Access audio settings

Do you have a question?

Get help

Make Windows better

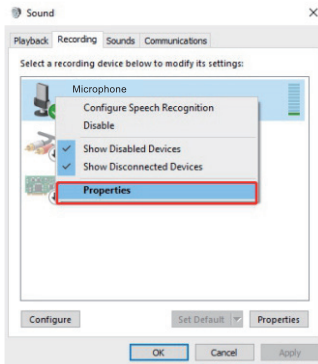
Give us feedback



BATTLE SHOUT 300 XLR

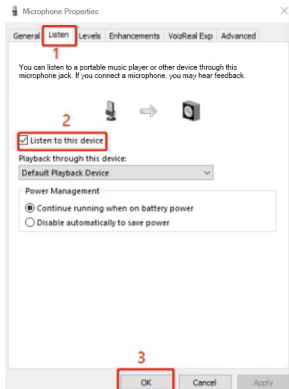
4

Cliquez avec le bouton gauche de la souris sur (Enregistrement), sélectionnez (Microphone), cliquez avec le bouton droit de la souris et sélectionnez (Propriétés).



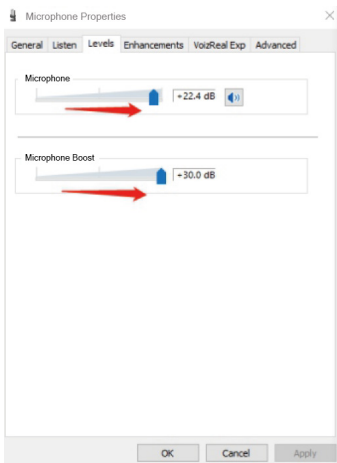
5

Sélectionnez (Écoute) dans la fenêtre contextuelle, puis vous pouvez choisir d'écouter cet appareil ou non, en cochant/décochant la case d'option.



6

Réglez le volume du microphone dans la fenêtre (Niveau) (comme indiqué ci-dessous).



TECHNISCHE DATEN

Mikrofoneinheit	16-mm-Kondensator
Richtcharakteristik	Niere
Frequenzgang	20Hz - 20 kHz
Empfindlichkeit	-45±3db
Impedanz	≥680Ω
Betriebsspannung	1.0V-48V
Abmessungen	179mmx52mmx52mm

VERPACKUNGLISTE

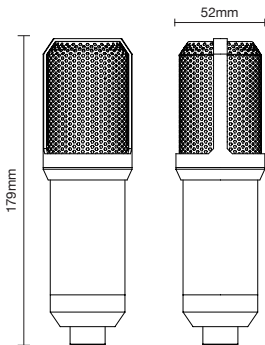
Kondensatormikrofon X1

Mikrofonkabel XLR auf 3,5-mm-Klinke X1

Stoßdämpferhalterung X1 Auslegerständer X1

Pop-Filter mit großem Stahlnetz X1 Tischklemme X1

Mini-Pop-Filter X1 Benutzerhandbuch X1



BETRIEBSANLEITUNG

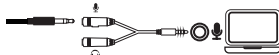
Mit Soundkarte verbinden



Verbindung mit Desktop-Computern

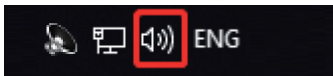


Mit Laptops verbinden

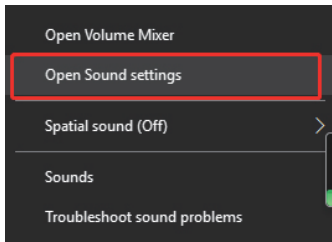


EINSTELLUNG DER MIKROFONLAUTSTÄRKE/ LAUTSTÄRKEEINSTELLUNG

- 1 Klicken Sie mit der rechten Maustaste auf das Tonsymbol

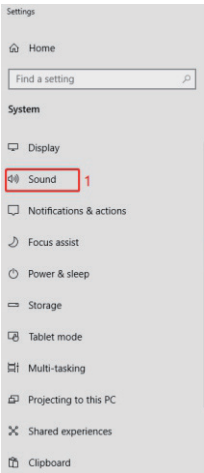


- 2 Klicken Sie mit der linken Maustaste auf Sound Settings



3

Klicken Sie mit der linken Maustaste auf das Bedienfeld Ton



Sound

Manage sound devices

Advanced sound options



App volume device preferences

Customise app volumes and the speakers or devices they use.

Related Settings

Bluetooth and other devices

Sound Control Panel **2**

Microphone privacy settings

Ease of Access audio settings

Do you have a question?

Get help

Make Windows better

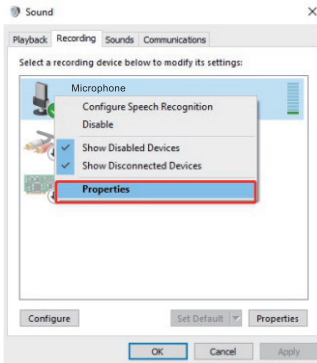
Give us feedback



BATTLE SHOUT 300 XLR

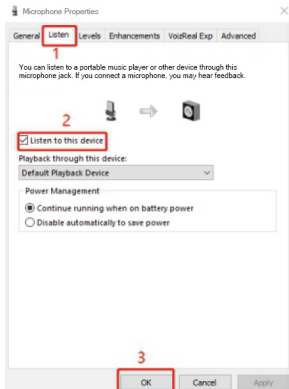
4

Klicken Sie mit der linken Maustaste auf (Aufnahme), wählen Sie (Mikrofon), klicken Sie mit der rechten Maustaste darauf und wählen Sie (Eigenschaften)



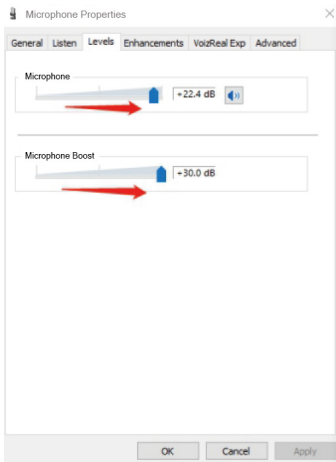
5

Wählen Sie im Pop-up-Fenster die Option (Mithören), dann können Sie wählen, ob dieses Gerät abgehört werden soll oder nicht, indem Sie das Optionsfeld ankreuzen bzw. nicht ankreuzen



6

Stellen Sie die Mikrofonlautstärke im Fenster (Pegel) ein (wie unten gezeigt)



SPECIFICHE TECNICHE

Unità microfonica	Condensatore da 16 mm
Direzionalità	Cardioide
Risposta in frequenza	20Hz - 20 kHz
Sensibilità	-45±3db
Impedenza	≥680Ω
Tensione di funzionamento	1.0V-48V
Dimensioni	179mmx52mmx52mm

ELENCO IMBALLAGGI

Microfono a condensatore X1

Cavo microfono XLR a jack da 3,5 mm X1

Montaggio degli ammortizzatori X1

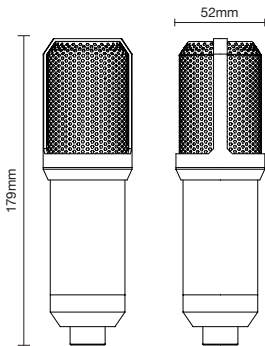
Supporto per braccio X1

Filtro Pop a maglia grande in acciaio X1

Tabella Clip X1

Mini filtro pop X1

Manuale utente X1



GUIDA OPERATIVA

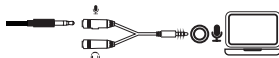
Collegamento con la scheda audio



Collegamento con i computer desktop



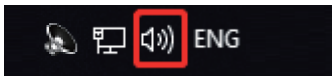
Connettersi con i computer portatili



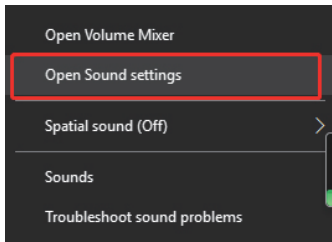
BATTLE SHOUT 300 XLR

IMPOSTAZIONE DEL VOLUME DEL MICROFONO/ IMPOSTAZIONE DELL'ASCOLTO

- 1 Fare clic con il tasto destro del mouse sull'icona del suono

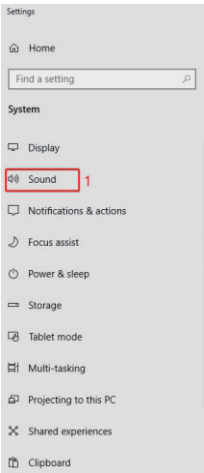


- 2 Cliccate con il tasto sinistro del mouse su Impostazioni audio



3

Cliccate con il tasto sinistro del mouse sul pannello di controllo del suono



Sound

Manage sound devices

Advanced sound options



App volume device preferences

Customise app volumes and the speakers or devices they use.

Related Settings

Bluetooth and other devices

Sound Control Panel **2**

Microphone privacy settings

Ease of Access audio settings

Do you have a question?

Get help

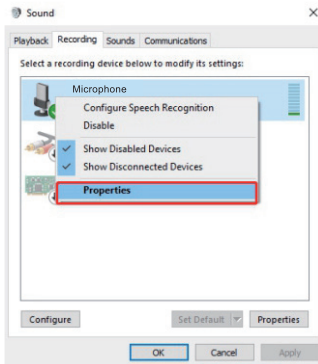
Make Windows better

Give us feedback

BATTLE SHOUT 300 XLR

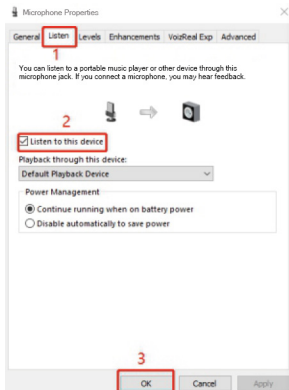
4

Fare clic con il tasto sinistro del mouse su (Registrazione), selezionare (Microfono), fare clic con il tasto destro del mouse su di esso e selezionare (Proprietà).



5

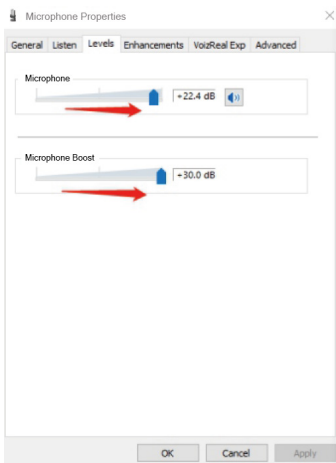
Selezionate (Ascolto) dalla finestra a comparsa, quindi potete scegliere se ascoltare o meno questo dispositivo, selezionando/deselezionando la casella di opzione



6



Impostare il volume del microfono nella finestra (Livello) (come mostrato di seguito)



ESPECIFICAÇÕES TÉCNICAS

Unidade de microfone	Condensador de 16 mm
Directividade	Cardioide
Resposta de frequência	20Hz - 20 kHz
Sensibilidade	-45±3db
Impedância	≥680Ω
Tensão de funcionamento	1.0V-48V
Dimensões	179mmx52mmx52mm

LISTA DE EMBALAGEM

Microfone condensador X1

Cabo de microfone XLR para conector de 3,5 mm X1

Suporte de choque X1

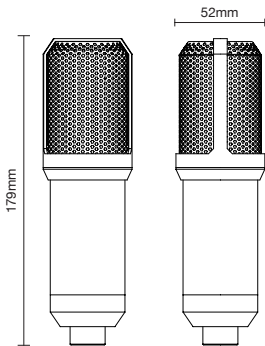
Suporte da lança X1

Filtro Pop de malha de aço grande X1

Clipe de mesa X1

Mini filtro pop X1

Manual do usuário X1



GUIA DE FUNCIONAMENTO

Ligar à placa de som



Ligação a computadores de secretária

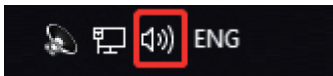


Ligar a computadores portáteis

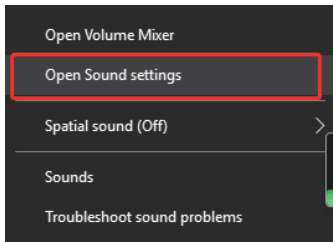


REGULAÇÃO DO VOLUME DO MICROFONE/ REGULAÇÃO DA AUDIÇÃO

- 1 Clique com o botão direito do rato no ícone de som



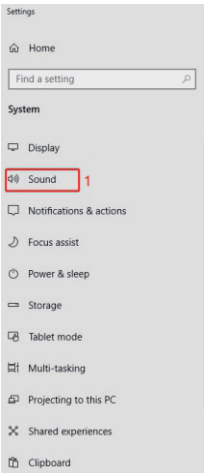
- 2 Clique com o botão esquerdo do rato em Definições de som





3

Clique com o botão esquerdo do rato no painel de controlo Som



Sound

Manage sound devices

Advanced sound options



App volume device preferences

Customise app volumes and the speakers or devices they use.

Related Settings

Bluetooth and other devices

Sound Control Panel **2**

Microphone privacy settings

Ease of Access audio settings

Do you have a question?

Get help

Make Windows better

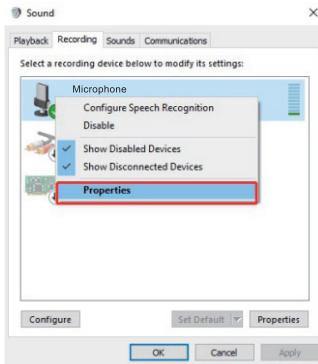
Give us feedback



BATTLE SHOUT 300 XLR

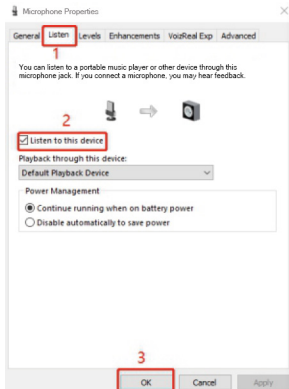
4

Clique com o botão esquerdo do rato em (Gravar), seleccione (Microfone), clique com o botão direito do rato e seleccione (Propriedades)



5

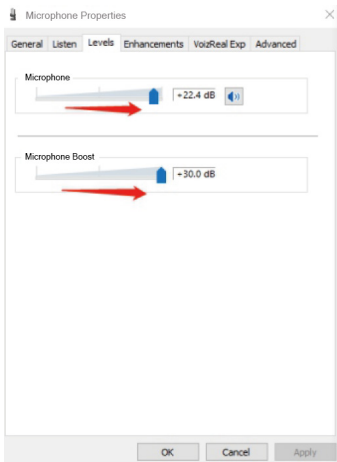
Selecione (Ouvir) na janela pop-up e, em seguida, pode escolher ouvir este dispositivo ou não, marcando/desmarcando a caixa de opção



6



Defina o volume do microfone na janela (Nível) (como mostrado abaixo)





BATTLE SHOUT 300 XLR

more information at: www.tempestofficial.com

